

XCAP Log Analysis & Reporting

Powerful Analysis & Reporting

XCAP is a powerful and highly configurable analysis platform that allows you to mine, analyse and report data gathered in XCAL. Available as both a stand-alone platform and an enterprise-grade client-server solution, it supports all wireless standards and major third party data formats.

XCAP minimises OPEX by automating the whole network post-processing and troubleshooting workflow. Because it's designed by engineers for engineers, it comes loaded with a comprehensive list of standard-specific KPIs, is easy to use, configure and maintain and is continually evolved to capture user feedback and major feature upgrades.

Use XCAP to

- Quick troubleshooting and conduct root-cause analysis of wireless networks – including massive volumes of drive test data
- Provide detailed reports on service-specific and overall network performance
- Benchmark radio and application level metrics
- Build and present KPI reports across the enterprise
- Analyse trends and perform complex statistical analysis
- Visualise service and network-level performance geospatially

Benefits

- Scalable, stable platform – either stand-alone or client-server configuration
- Robust data management system for managing and mining massive volumes of data quickly and easily
- Technology independent and first to market for new technologies
- Supports every major new wireless technology: GSM, GPRS, EDGE, WCDMA, HSDPA, HSUPA, HSPA+, DC-HSDPA, QChat, CDMA2000, EVDO Rev.0, Rev.A, Rev.B, TD-SCDMA, WiMAX, LTE, LTE-A, and LTE-3CA
- Minimise OPEX through process automation
- Easy to use, install and configure and low cost maintenance
- Highly customisable, stable and robust
- User modifications (eg. new features/functions) are encouraged and custom delivered
- Pre-defined Customized Report

Root-cause analysis and reporting



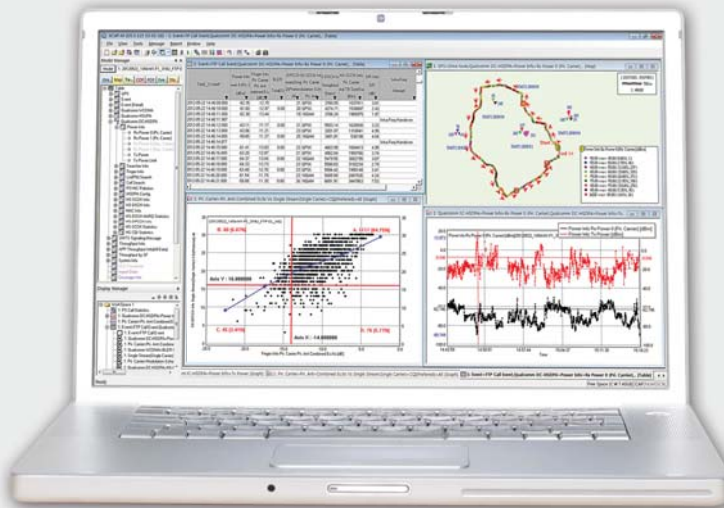
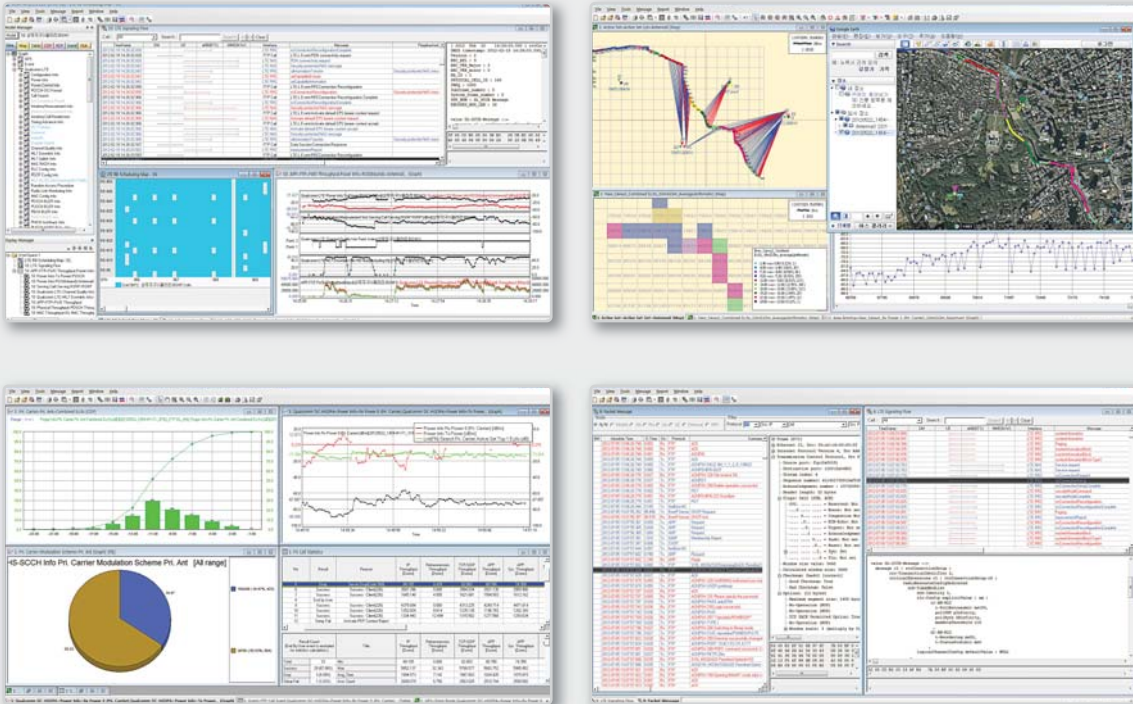
Together with XCAL, XCAP offers unparalleled sophistication and simplicity in improving your network performance.

Key Features

Multi-window synchronization analysis	Synchronizing with other window/table/map/graph for particular call and data's detail analysis
Coverage Analysis	Able to check real coverage of optimization sector or cell planning by RF data
Data Filtering Analysis	Filtering data by Bad Coverage, Good Coverage, Idle, Traffic stats or user defined condition and display result in table/graph/map/window
In-building Analysis	Support In-building condition analysis by inputting map
Packet Analysis	Support to analyze only packet information for packet data service
Application Analysis	APP analysis function and statistical items are added for Application such as Ping/VOD/HTTP and so on in Auto call
Statistics Analysis	Support statistical information for each call and able to analysis with particular parameter by synchronize with specific call
VoLTE Analysis	Able to analyze RTP (WB-AMR) Packet and voice recovery
Voice QoS Analysis	Provide specialized function by combining general Time Domain analysis with Frequency Domain function
Shell Command based Interfacing compatibility	Support XCAP operation by Shell (Dos Prompt) Command

XCAP

Log Analysis & Reporting



Regional offices

Hong Kong (Head Office)

Accuver APAC
 Tel: +852 2210 7004
 Fax: +852 2210 7017
 Enquiries:
sales.apac@accuver.com
support.apac@accuver.com

United Kingdom

Accuver EMEA
 Tel: +44 20 8863 1118
 Fax: +44 20 8863 1688
 Enquiries:
sales.emea@accuver.com
support.emea@accuver.com
<http://support2.accuver-emea.com>

Poland

Accuver Poland
 Tel: +48 22 3702518
 Enquiries:
sales.emea@accuver.com
support.emea@accuver.com
<http://support2.accuver-emea.com>

Japan

Accuver Japan
 Tel: +81-3-6430-2580
 Fax: +81-3-6430-2589
 Enquiries:
sales@accuver.jp
support_aj_1@accuver.com
<http://www.accuver.jp/login.html>

Korea

Innowireless Co Ltd
 Tel: +82 31 788 1700
 Fax: +82 31 705 0712
 Enquiries:
sales@accuver.com

USA

Accuver Americas
 Tel: +1 469 241 6100
 Fax: +1 469 241 6199
 Enquiries:
sales.usa@accuver.com
support.usa@accuver.com
<http://help.usa.accuver.com/helpdesk>